



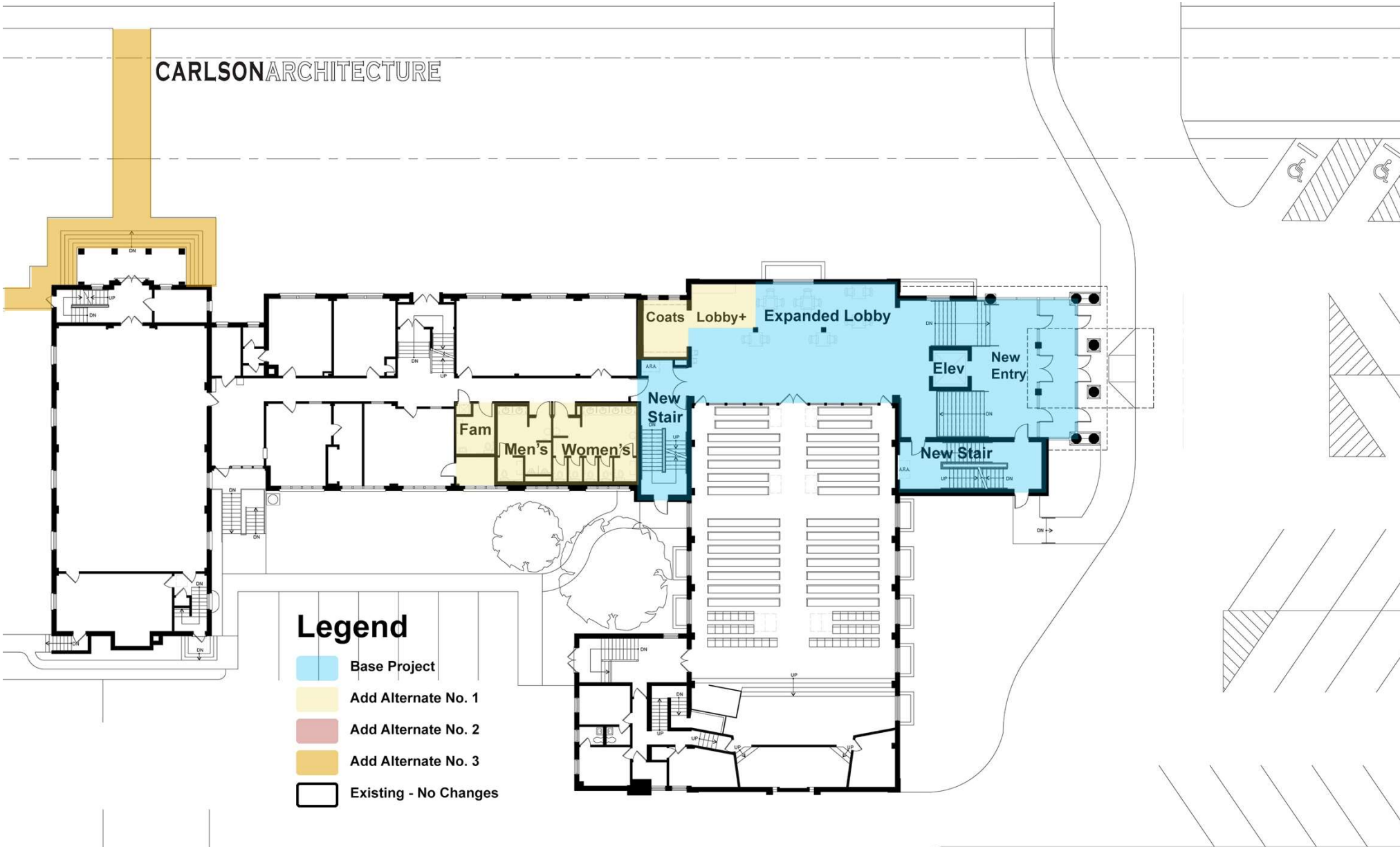
Supplemental Information Packet

Questions have arisen as the congregation has begun to further digest the facility renovation plans. The attached color-coded floor plans are provided to help answer those questions.

You will note that sections of the plans are shaded with blue, yellow, red, orange or no color. Each delineates both its priority level within the project scope, and how its components relate to the mission.

Issued April 18, 2021

CARLSON ARCHITECTURE



Legend

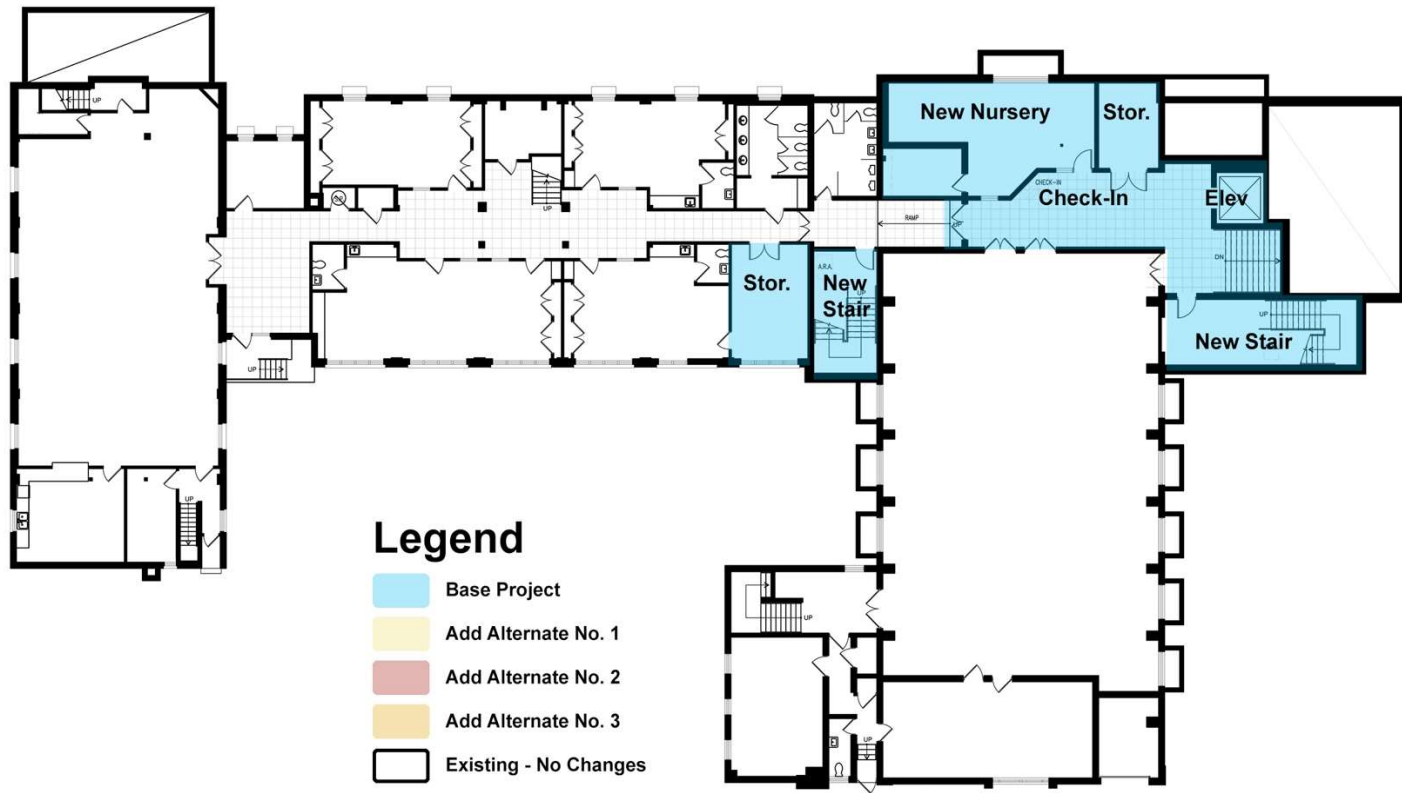
- Base Project
- Add Alternate No. 1
- Add Alternate No. 2
- Add Alternate No. 3
- Existing - No Changes



Main Level Floor Plan

Cityview
COMMUNITY CHURCH





Legend

- Base Project
- Add Alternate No. 1
- Add Alternate No. 2
- Add Alternate No. 3
- Existing - No Changes



Lower Level Floor Plan



1. Blue indicates the core elements of the project. These are the first-order priorities.

- Funding will go first to these improvements. Shown on the floor plans as the base project.
- A new expanded entrance area provides an open, airy and inviting entrance to the community. This space is achieved by enclosing what is currently the exterior drive-up space under the existing portico. This approach allows the existing roof and profile of the building to remain untouched.
- This space includes a full-size elevator that allows all to easily access any of the three levels of our facility. The elevator fully meets all requirements of the Americans with Disabilities Act (ADA).
- The new configuration allows anyone to enter the church at grade level with no encumbering stairs.
- New code-compliant, safer stairways will be constructed.
- The new stairs and expansion allow for a significant increase in the size of the lobby to facilitate gathering and community building.
- A new large nursery will be constructed on the lower level in what is now the Fellowship Hall lobby. Easily accessed by all, the nursery will accommodate the ever-growing number of new births happily occurring in our congregation. This change also provides an easily found check-in area for the whole of Kids' City located right at the bottom of the new stairway accessing the lower level.

2. Yellow indicates the second-order project priorities.

- If funding allows will be constructed in addition to the blue areas. Shown on floor plans as alternate number 1.
- The main focus of this project component is the provision of modern, functional and attractive ADA-compliant toilet facilities for men and women, along with a designated family restroom. Cityview currently has no men's restroom on the main floor.
- The new toilet rooms allow for the removal of the existing stopgap ADA toilet and coat room component, freeing up space for a new coat room and further expanded lobby space.

3. Red indicates the third-order project priorities:

- Based on funding this will be added to the blue and yellow areas. Shown on floor plans as alternate number 2.
- This component transforms the current awkwardly arranged third floor into four new, optimally sized classrooms for Explore Hour, Journey Groups, Community Groups and the like. Quality adult educational space is a pressing need as our congregation grows numerically, and as we provide more and more opportunities for spiritual growth.

4. Orange indicates the fourth-order project priorities.

- Shown on floor plans as alternate number 3.
- Based on funding this work will replace the long deteriorating concrete stairs and walks at the southwest portico in front of the gym. While this is not a much-used entrance, it is one of the most visible aspects of our building as large volumes of traffic pass through the busy intersection of York and St. Charles.
- Doing this work has an additional benefit. We intend to use this as our main entrance for the duration of the construction project. A temporary ramp will be provided during for ADA access to the main floor.